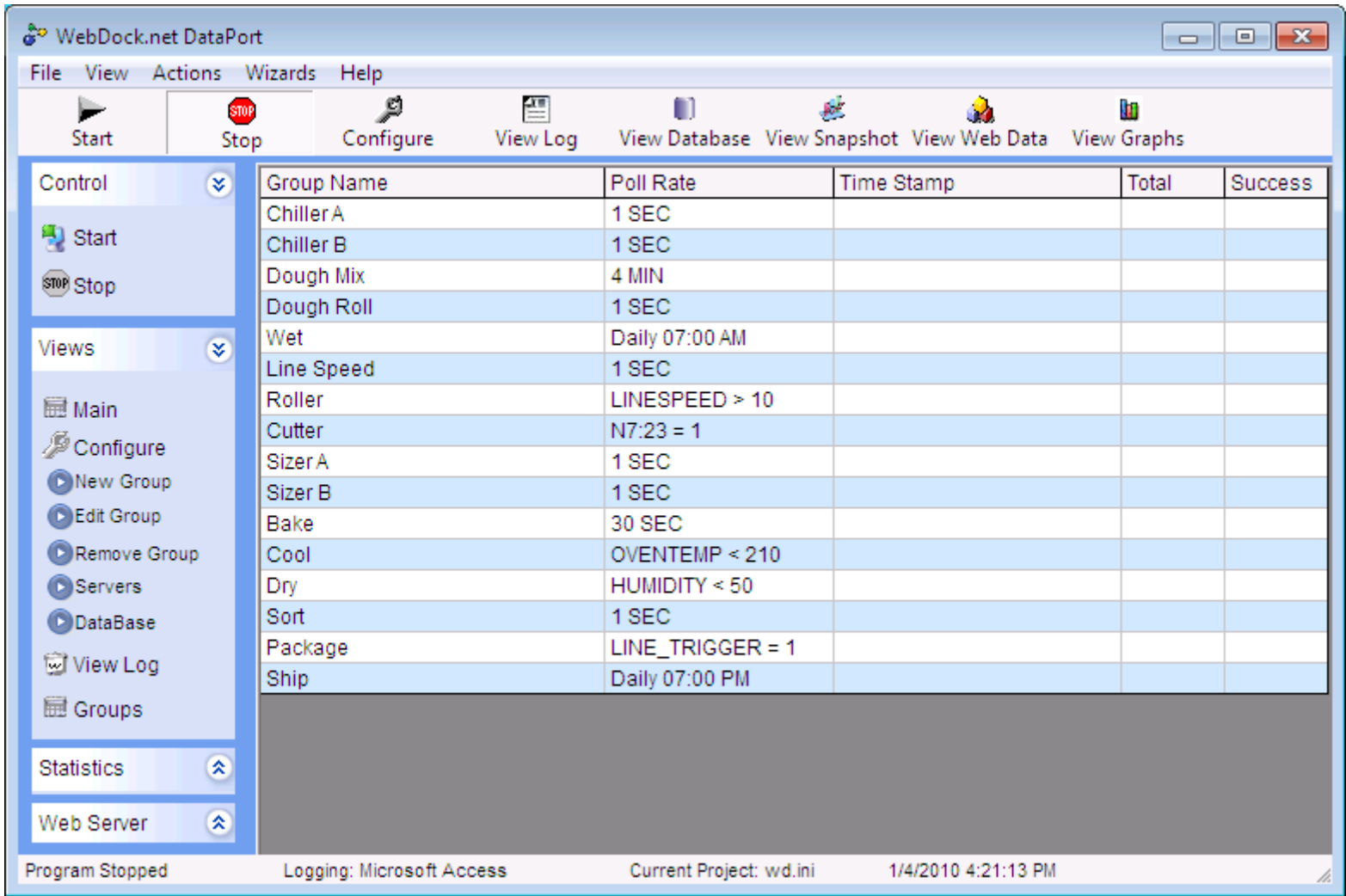


Finally there is a solution! Welcome to WebDock software. The place where industrial software meets usability. Meet DataPort. Data Collection and viewing made easy and affordable! Download a fully functional copy at [www.WebDock.net](http://www.WebDock.net) today!



WebDock DataPort is a feature packed data collection and viewing software package for Microsoft Windows 2000/XP/Vista/7.

DataPort logs data to either a Microsoft Access or Microsoft SQL server database.

DataPort automatically creates all data base structures. No database knowledge is required. For Microsoft Access you do not have to have Microsoft Access on the computer.

- The database is automatically created
- The database tables are automatically created
- The database columns are automatically created
- Includes a database viewer for viewing Microsoft Access databases.
- OPC Browser support for easy point and click configuration
- Ability to enable and disable groups on the fly The ability to scale a data point by (x,/,+,-) before storage
- Two-Step Configuration Wizard - Takes you step by step through setting up data groups and adding multiple PLCs, data collection rates, and points to each group
- Security - Built with security in mind. WebDock

- DataPort uses Microsoft 2000/XP/Vista/7 users and groups type security to ensure your data server is protected.
- Live Data Monitor to view real time snapshots of your data
- Live Graph Monitor to view real time graphs of your data
- The ability to export live data to Microsoft Excel (CSV) format from both the main program and a web browser.
- The ability to schedule database exports to csv based on date/time
- Built-In Web server for remote data monitoring with graphing from any standard web browser.
- Create your own web based reports for remote data monitoring and graphing from any standard web browser.
- The ability to stop/start the program from a web browser
- The ability to enable or disable a group from a web browser
- XML Server for custom application support
- Group viewer to view all configured groups and data points
- Groups can be triggered by time, date, daily or controller address value. Operators include <, >, <=, >=, = for comparison triggers.
- Enhanced search functions.
- Save time by cloning an existing group

\$950 WD-DP-150EN (150 data points) \$1050 WD-DP-300EN (300 data points) \$1750 WD-DP-UNEN (Unlimited data points)

Download a fully functional copy at [www.WebDock.net](http://www.WebDock.net) today!

### System Requirements

- 1Ghz or better
- 1GB Ram
- 20 Mb of Hard drive space for the application
- Windows NT/2000/XP/Vista/7
- OPC server such as Rockwell Software's RSLinx, Matrikon or Kepware OPC Server

### Specifications

- Microsoft Access or Microsoft SQL
- Real Time Data Viewer with Graphing
- Wizard Driven Configuration
- Historical Data Viewer
- Built-In Web Server for view reports and graphs
- Send E-mails

### Part Numbers with Pricing

- WD-DP-150EN (150 tag limit) \$950.00
- WD-DP-MTEN (300 tag limit) \$1050.00
- WD-DP-UNEN (Unlimited tag limit) \$1,750.00

*Above DataPort Pricing Structure Subject to Change.*

### Contact/Company Info

- [www.webdock.net](http://www.webdock.net)
- [www.webdock.net](http://www.webdock.net)
- [sales@webdock.net](mailto:sales@webdock.net)
- Software Division
- 765 English Mt Rd Cosby TN 37722

\* "Software for the Next Industrial Age" is a Trademark of WebDock protected by US and International rights.